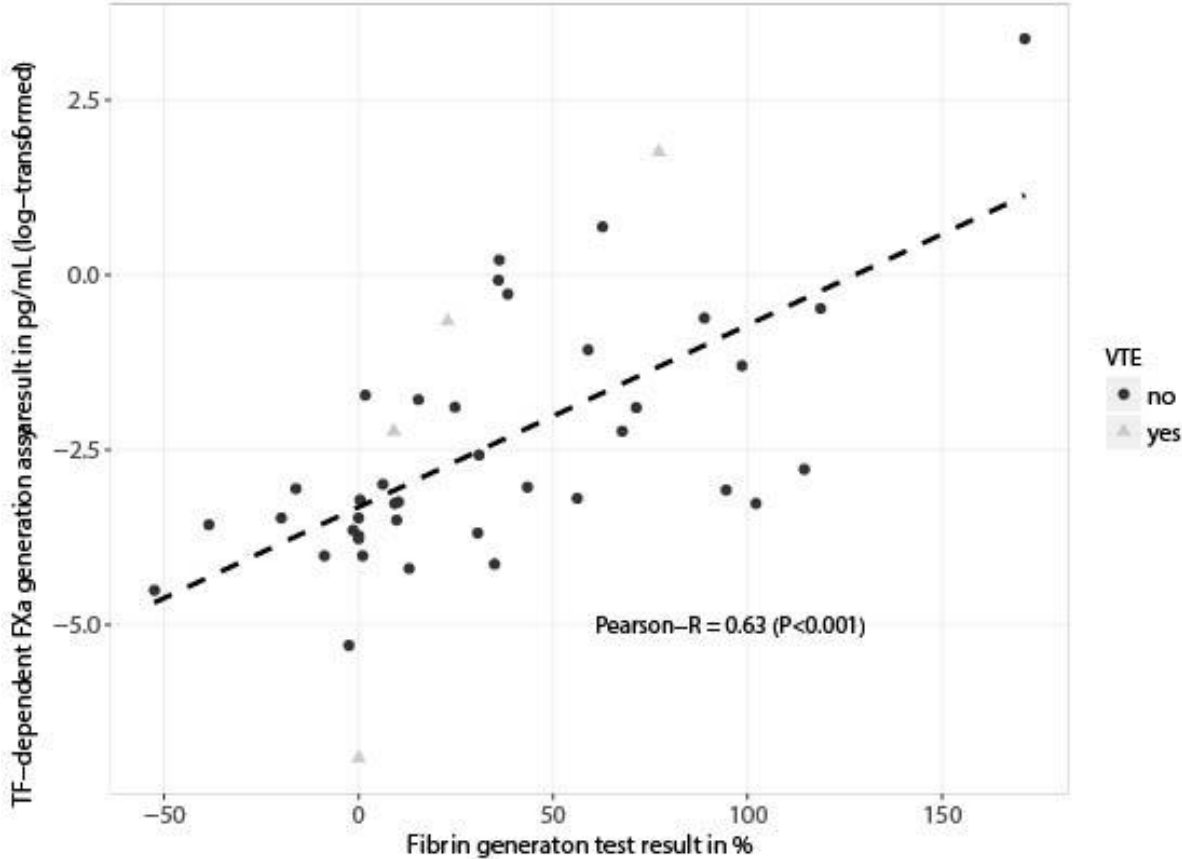


Supplementary Table. Multivariable analysis for dichotomized fibrin generation test (6-month study period)

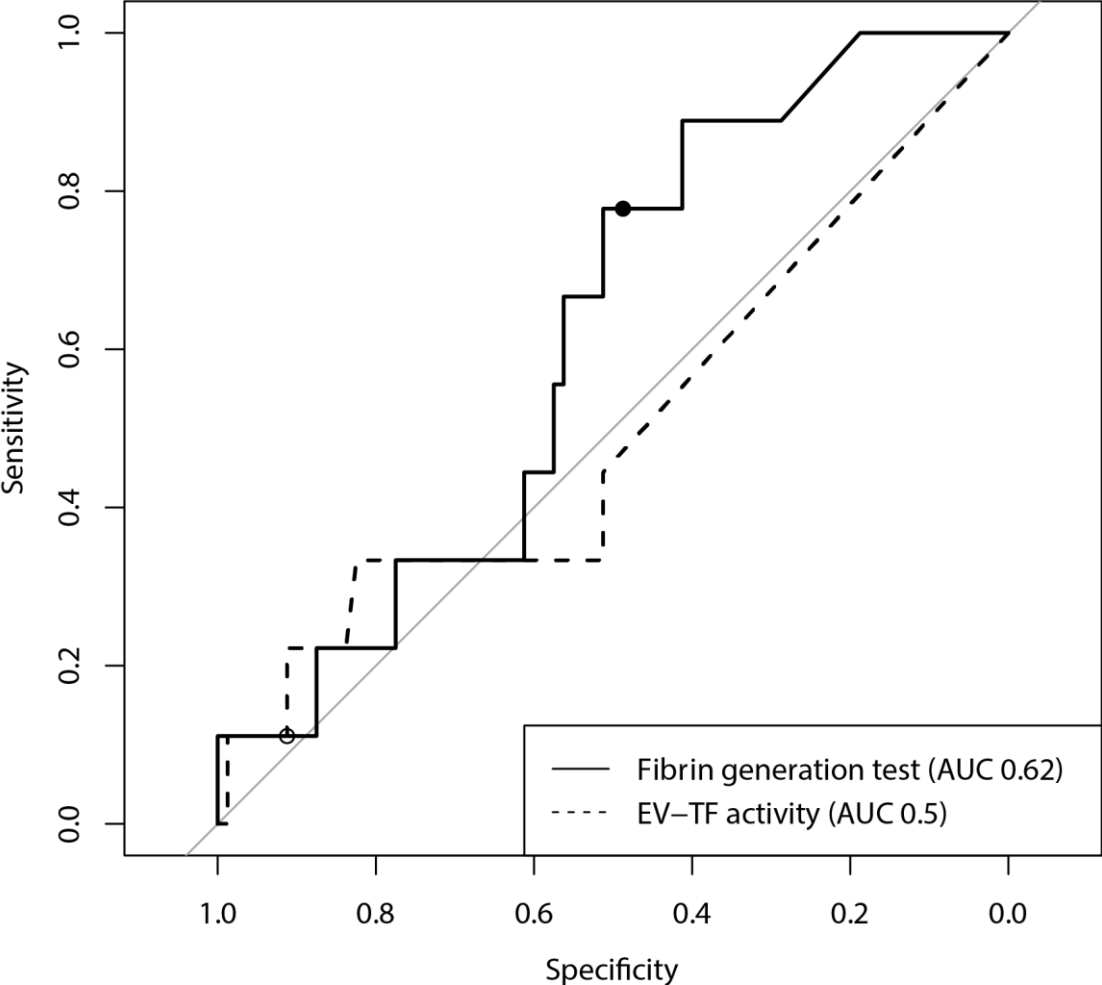
	Adjusted subdistribution hazard ratio (95% confidence interval)
Age (per 1 year increase)	1.00 (0.96-1.03)
Male sex	0.95 (0.47-1.89)
Distant metastasis	1.26 (0.61-2.61)
D-dimer levels (per 1 ug/L [log-transformed] increase)	1.91 (1.40-2.62)
Khorana score (per 1 point increase)	1.008 (0.768-1.32)
Dichotomous fibrin generation test	1.94 (0.99-3.80)

Supplemental Figure 1. Correlation between fibrin generation test and tissue factor-dependent factor Xa generation assay for patients with measurable EV-TF activity only

Abbreviations: FXa, factor Xa; TF, tissue factor; VTE, venous thromboembolism.



Supplemental Figure 2. Receiver operating characteristics curves for the fibrin generation test result and EV-TF activity



Abbreviations: EV, extracellular vesicles; TF, tissue factor.
The solid dot marks the pre-defined 13% cut-off for the fibrin generation test. The open dot marks the pre-defined 0.5 pg/mL cut-off for the EV-TF activity